

**WHEELHAUS**



---

Model Spotlight

# Kamp-Haus

---

**wheelhaus.com**  
**307-733-7700**  
**info@wheelhaus.com**



## OVERVIEW

**\$65,000** Base Price

**240 SQFT**

**1 Bedroom**

**1 Bathroom**

The Kamp-Haus is a smaller yet refined version of our traditional 400 sq. ft. models. Offered at 240 sq. ft., these models are perfect for tiny living, a guesthouse, a backyard office or a combination of all three. These models can be easily transported to a site and then moved again if the need arises. The Kamp-Haus has an attractive Scandinavian style architecture with over-sized windows but also well insulated for any weather. The outdoor covered deck increases the overall inside/outside living arrangement while protected from sun and inclement weather.

# AMENITIES

- Sliding glass door opens to deck
- Sleeps up to 2 Adults
- Bedrooms sized for queen bed
- 2-burner cook top
- Refrigerator/freezer/microwave
- Front is almost entirely glass
- Windows optimize light on all sides



# TECHNICAL

**Weight:** All models vary between 5,000 and 25,000 pounds depending on finishes and fixtures.

**Dimensions:** Units are 8'3" wide by 29'6" long. Units with front decks are 35'6" long.

**Turnkey:** All units come "turn key" with all appliances and hardware included. All you will need is furniture.

**Utility Hookups:** All utility hookups are underneath each unit and are ready to be connected once on site.

## What You'll Need:

- Water 3/4" line (this will need to run underneath the area your unit will be placed)
- Sewer connection 4" line (this will need to run underneath the area your unit will be placed)
- Power 50 AMP service (within 20 feet of the unit)



# UPGRADES

**HVAC** Base price includes Cadet® toe-kick heaters.

- + HVAC/Slim ducted mini-slim unit

## Fireplace

- + Gas fireplace
- + Electric fireplace

## Set Estimate

- + Skirt material and leveling piers
- + Labor to level, set, install skirting (if needed) and hook up utilities (TBD by specific location and needs). Additional items for install to be discussed specifically for your build. \*\*

\*\* Estimate depends on local subcontractor

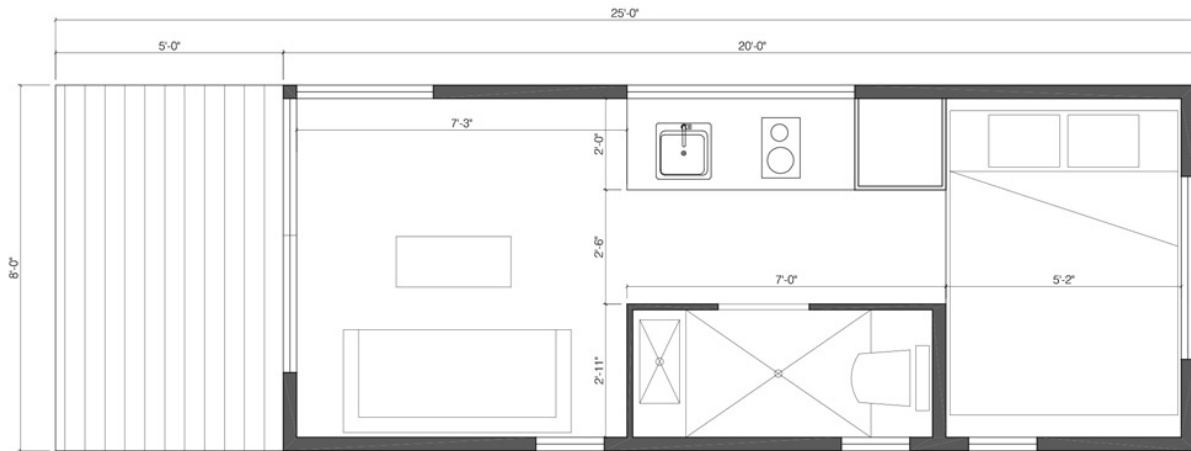
## Decks

- + Front railings

## Extras

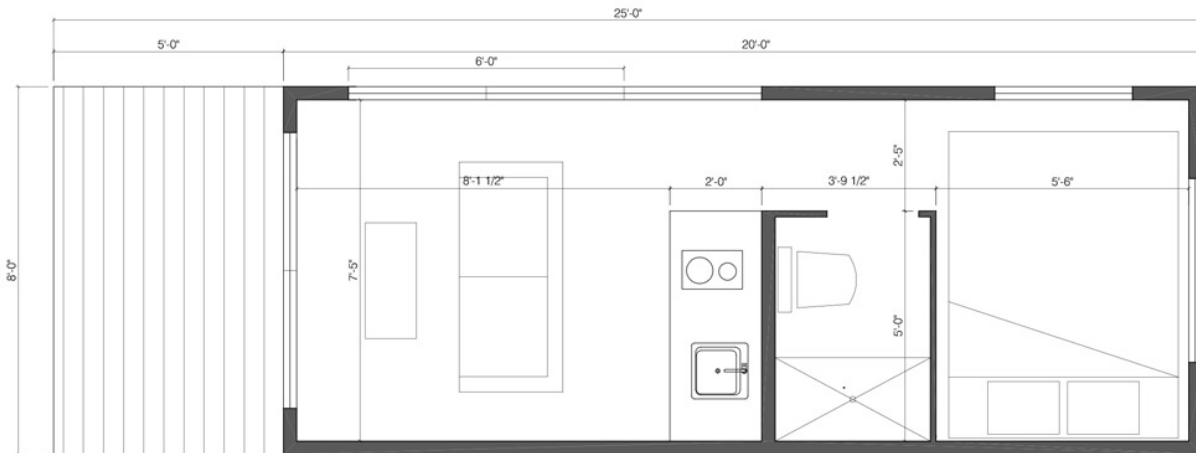
- + Bedroom wall sconces with switch

# FLOORPLAN



1 Floor Plan - A

scale: 1/4" = 1'-0"



3 Floor Plan - C

scale: 1/4" = 1'-0"