



**WHEELHAUS**

---

Model Spotlight

# Stack-Haus

---

**wheelhaus.com**  
**307-733-7700**  
**info@wheelhaus.com**



# OVERVIEW

**\$365,000** Base Price

**1400 SQFT**

**2+ Bedrooms**

**2 Bathrooms**

Meet our Stackhaus, a 1400 sq. ft. two-story modular home with an optional garage! This home is perfect for families and those who enjoy an upstairs living space for those exceptional views. Complete with two upstairs decks and an A-frame roof-line, this home is spacious and sleeps over 6 adults. It includes two bedrooms and two bathrooms and has multiple floorplans to choose from. Interior and exterior stairwells guide you to the open living room and kitchen area upstairs.

# AMENITIES

- Sliding glass door opens to decks
- Sleeps up to 6 Adults
- Bedrooms sized for queen or king beds, two side tables
- Conduit ready for cable and cat six internet
- Front is almost entirely glass
- Windows optimize light on all sides
- Counter-depth nearly 10 cubic ft
- 24" wide refrigerator/freezer
- 2-burner cook top
- Microwave
- Dishwasher
- Full bar for dining
- A-Frame roofline



# TECHNICAL

**Weight:** All models vary between 5,000 and 25,000 pounds depending on finishes and fixtures.

**Dimensions:** Units are 10'5" wide by 38' long. Units with decks are 47' long.

**Insulation Values:**

- Walls: R-25
- Roof: R-35
- Floor: R-25

**Turnkey:** All units come "turn key" with all appliances and hardware included. All you will need is furniture.

**Utility Hookups:** All utility hookups are underneath each unit and are ready to be connected once on site.

**What You'll Need:**

- Water 3/4" line (this will need to run underneath the area your unit will be placed)
- Sewer connection 4" line (this will need to run underneath the area your unit will be placed)
- Power 50 AMP service (within 20 feet of the unit)



# UPGRADES

**HVAC** Base price includes Cadet® toe-kick heaters.

- + HVAC/Slim ducted mini-slim unit (\$5,500)

## Extras

- + On-demand tankless water heater (\$1,000)
- + On-demand water heater (\$750)
- + Vented washer and dryer all-in-one (\$2,700)
- + Rough plumbing stubbed and electric install for Laundry in bathroom, no equipment included (\$1,500)
- + Built-in cabinets in bedroom closet (\$3,800)
- + Bedroom wall sconces with switch (\$900)

## Set Estimate

- + Skirt material and leveling piers (\$3,000)
- + Labor to level, set, install skirting (if needed) and hook up utilities (TBD by specific location and needs). Additional items for install to be discussed specifically for your build. \*\* (\$3,500)

\*\* Estimate depends on local subcontractor

## Fireplace

- + Gas fireplace (\$5,750)
- + Electric fireplace (\$3,800)
- + Fireplace mantle and wood surround (\$1,200)

## Decks

- + Rear Deck 5' x 10'5" (\$3,500)
- + Front railings (\$4,500)
- + Rear railings (\$2,500)

## Additional Doors/Decks

- + Side 2'8" wide by 7'0" tall door (\$3,000)
- + Rear sliding Door 6'0" wide by 6'8" tall door (\$3,000)
- + Rear sliding door and 5' deck with overhang (\$6,500)

## Hitch-Haus On-site Mod Stitch

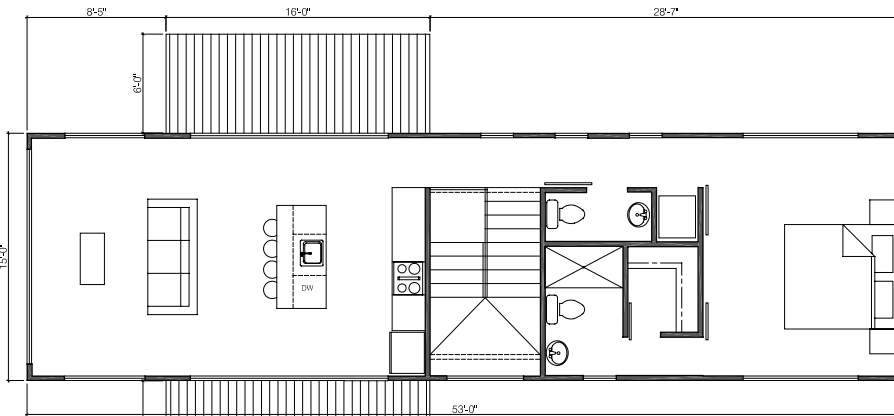
- + On-site Mod Stitch (\$2,500)
- + Engineering (\$3,000)

## Furniture

- + King bed – Ranchwood Headboard (\$2,500)

# FLOORPLAN

Upper Level



Lower Level

