

**WHEELHAUS**



---

Model Spotlight

# Caboose

---

**wheelhaus.com**  
**307-733-7700**  
**info@wheelhaus.com**



# OVERVIEW

**\$118,500** Base Price

**400 SQFT**

**1 Bedroom + Loft**

**1 Bathroom**

The Caboose is one of our original flagship models and the first lofted models designed. With an appearance like the “Caboose” final car of a train, it offers a stairs/ladder into a sleeping loft that adds an additional 120 sq. ft. that’s great for additional sleeping quarters. The gabled roof system coupled with the timber frame structure provides a classic look of a Mountain modern cabin. The loft can be utilized for sleeping while the downstairs can be living space, or you can add two beds in the loft with up to a king size bed in the downstairs while adding a sleeper sofa to sleep a total of 6 people.

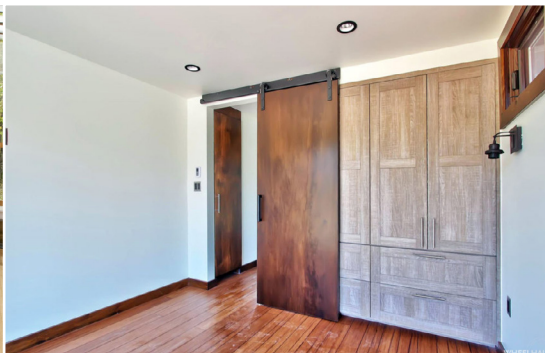
Rustic ranch wood siding used for ceilings and exterior is coupled with a gabled roof system and timber frame structure to give this unit a classic mountain cabin look with a modern, airy feel. With the added loft area, this model provides the an ample amount of sleeping space for up to 6 people and even more if you get creative.

Solid surface counter tops paired with high grade cabinetry and soft close doors and all the necessary hardware, fixtures, and appliances make the space feel luxurious yet convenient. The bathroom maximizes space and efficiency with a European style glass shower, tile, high end fixtures, and a closet large enough to house an optional combo washer/dryer and a linen shelf. The Caboose offers a fully covered front deck with prominent 6×6 posts, sliding glass entryway, and an optional covered rear deck. The Caboose is designed as a 400 sq. ft. home but has the ability to be a modular design.



# AMENITIES

- 10.5 ft wide x 38 ft long
- Sleeps up to 4 Adults + 2 Kids
- Complex roofline enables a 5" loft
- Loft allows for main level office
- Front is almost entirely glass
- Conduit ready for cable and cat six internet
- Windows optimize light on all sides



# TECHNICAL

**Weight:** All models vary between 5,000 and 25,000 pounds depending on finishes and fixtures.

**Dimensions:** Units are 10'5" wide by 38' long. Units with decks are 47' long.

**Insulation Values:**

- Walls: R-25
- Roof: R-35
- Floor: R-25

**Turnkey:** All units come "turn key" with all appliances and hardware included. All you will need is furniture.

**Utility Hookups:** All utility hookups are underneath each unit and are ready to be connected once on site.

**What You'll Need:**

- Water 3/4" line (this will need to run underneath the area your unit will be placed)
- Sewer connection 4" line (this will need to run underneath the area your unit will be placed)
- Power 50 AMP service (within 20 feet of the unit)



# UPGRADES

## HVAC

Base price includes Cadet® toe-kick heaters.

- + HVAC/Slim ducted mini-slim unit (\$5,500)

## Extras

- + On-demand tankless water heater (\$1,000)
- + On-demand water heater (\$750)
- + Vented washer and dryer all-in-one (\$2,700)
- + Rough plumbing stubbed and electric install for Laundry in bathroom, no equipment included (\$1,500)
- + Built-in cabinets in bedroom closet (\$3,800)
- + Bedroom wall sconces with switch (\$900)

## Set Estimate

- + Skirt material and leveling piers (\$3,000)
- + Labor to level, set, install skirting (if needed) and hook up utilities (TBD by specific location and needs). Additional items for install to be discussed specifically for your build. \*\* (\$3,500)

\*\* Estimate depends on local subcontractor

## Fireplace

- + Gas fireplace (\$5,750)
- + Electric fireplace (\$3,800)
- + Fireplace mantle and wood surround (\$1,200)

## Decks

- + Rear Deck 5' x 10'5" (\$3,500)
- + Front railings (\$4,500)
- + Rear railings (\$2,500)

## Additional Doors/Decks

- + Side 2'8" wide by 7'0" tall door (\$3,000)
- + Rear sliding Door 6'0" wide by 6'8" tall door (\$3,000)
- + Rear sliding door and 5' deck with overhang (\$6,500)

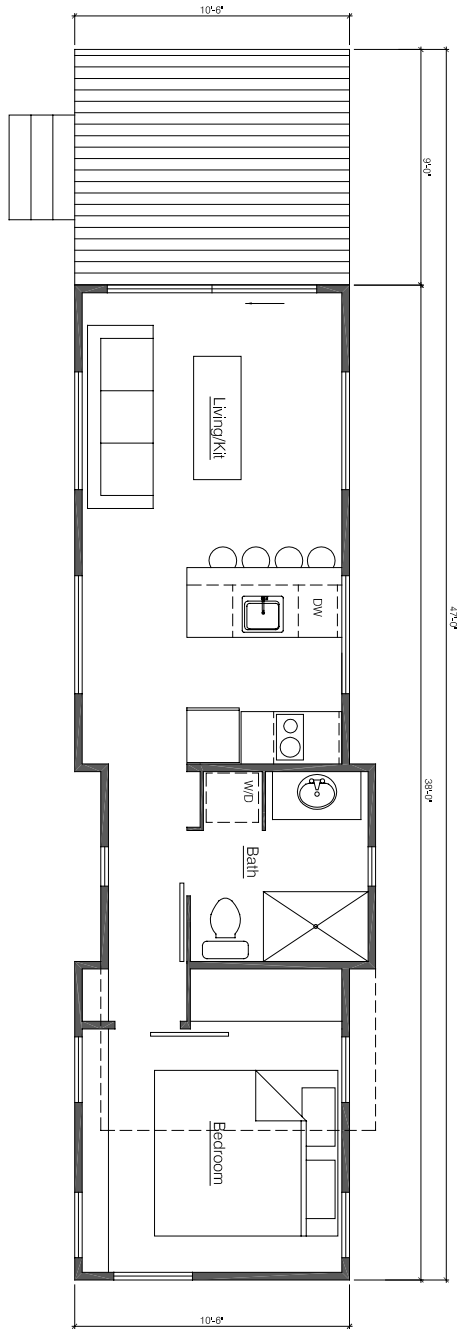
## Hitch-Haus On-site Mod Stitch

- + On-site Mod Stitch (\$2,500)
- + Engineering (\$3,000)

## Furniture

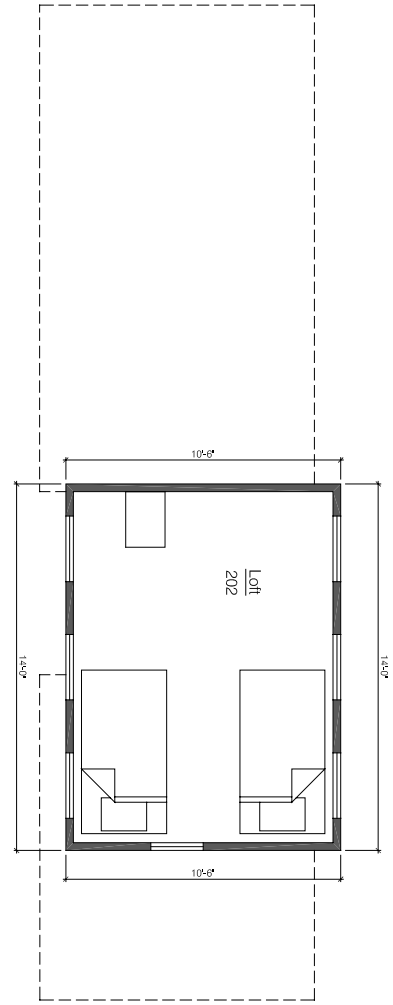
- + King bed – Ranchwood Headboard (\$2,500)

# FLOORPLAN



1 Main Floor Plan

scale: 3/16"=1'-0"



2 Upper Floor Plan

scale: 3/16"=1'-0"